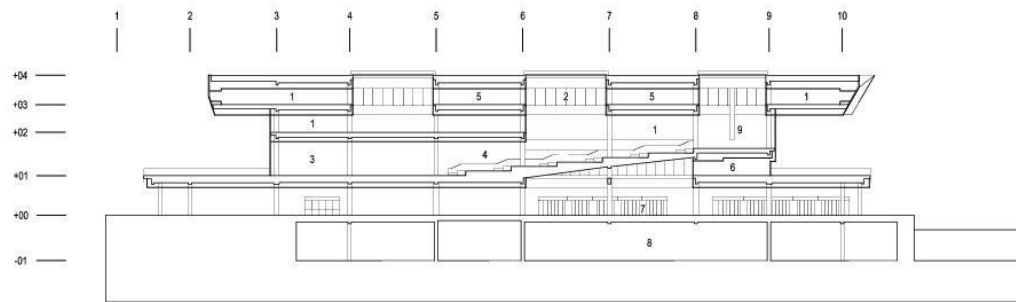


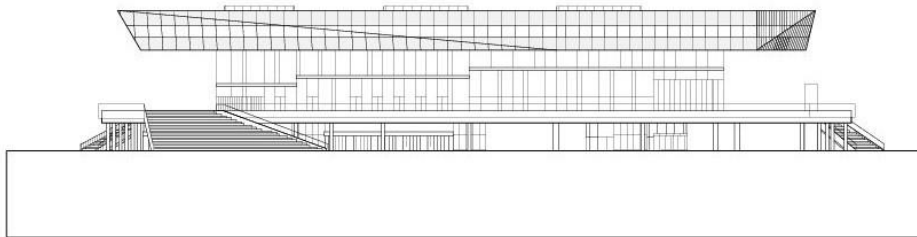
Dokk1 – from the south side



Section AA 1:750

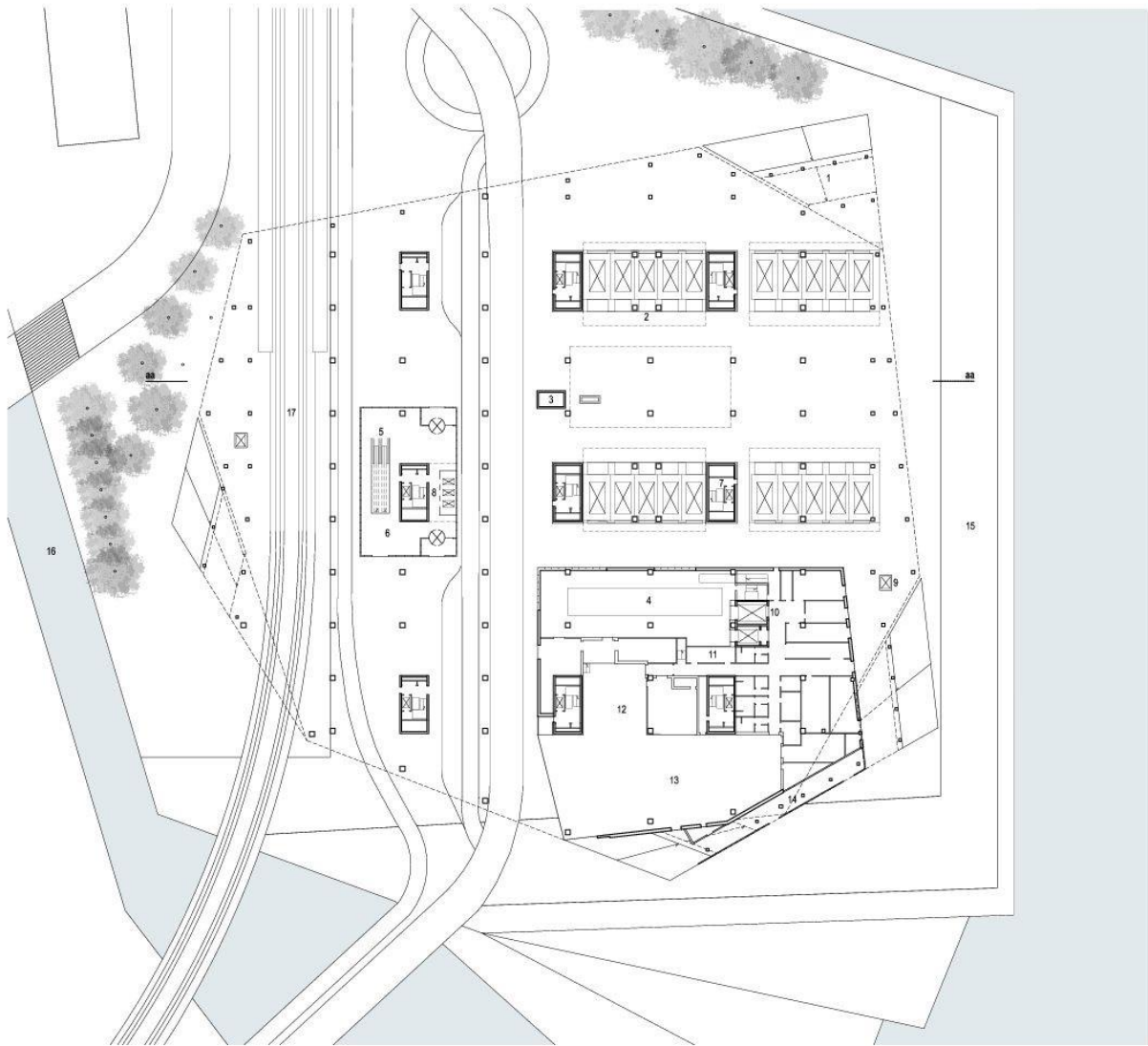
- 1 Rentable office area
- 2 Open to level 2
- 3 Media collection
- 4 Media ramp
- 5 Meeting rooms
- 6 Study nois
- 7 Transfer parking cabins
- 8 Automatic parking system
- 9 Art

Dokk1 – from the north side



Elevation north 1:750

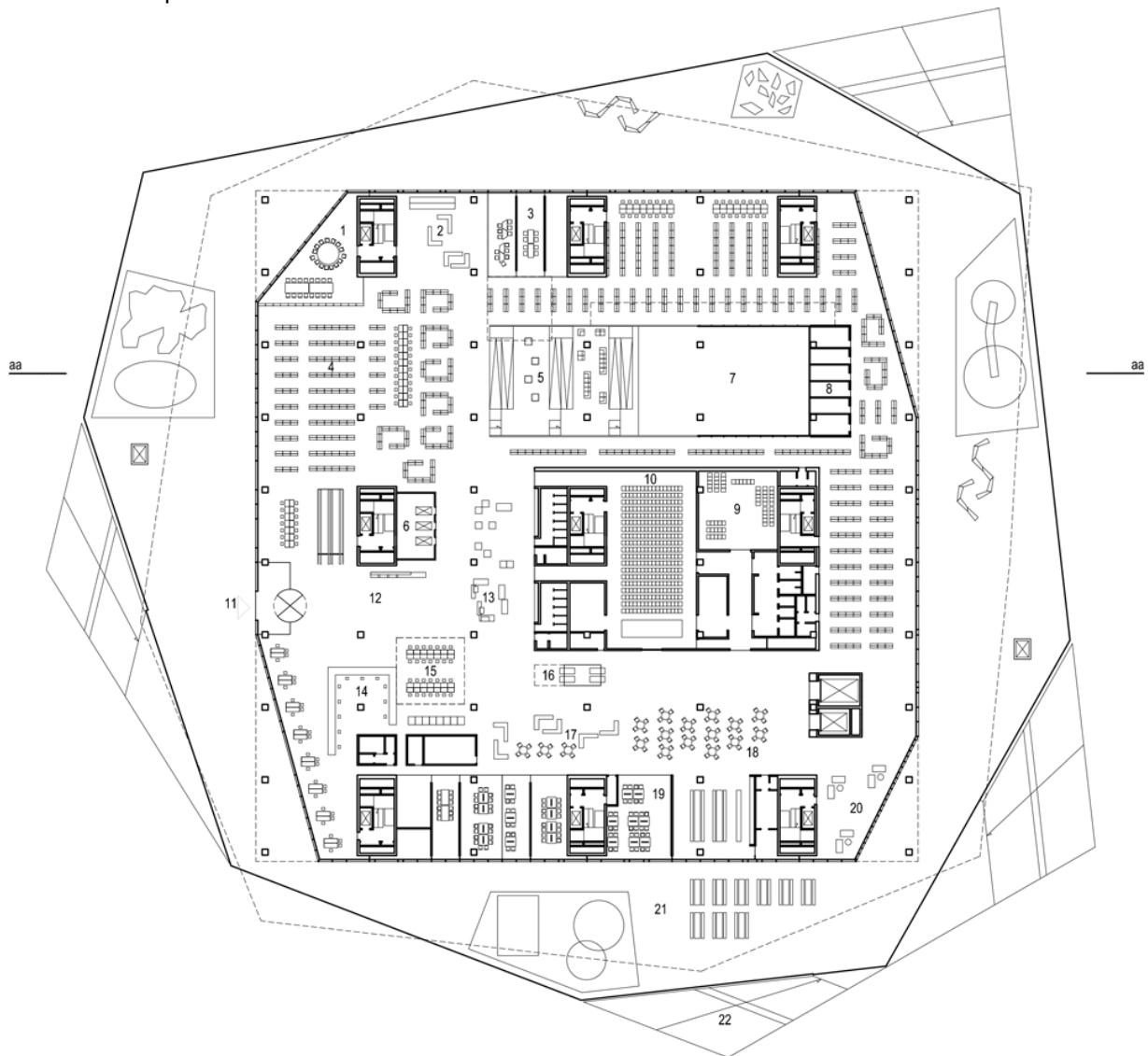
Dokk1 floor plan ground floor



Level 00 1:750

- 1 Sculptural staircase
- 2 Transfer cabins for parking
- 3 Parking administration
- 4 Books sorting machine
- 5 Escalators
- 6 Arrival center
- 7 Staircase
- 8 Panoramic elevator to level 1
- 9 Elevator to level 1
- 10 Goods elevators
- 11 Post sorting
- 12 Goods delivery
- 13 Logistics center
- 14 Rentable area
- 15 Harbour
- 16 Aarhus stream
- 17 Light rail

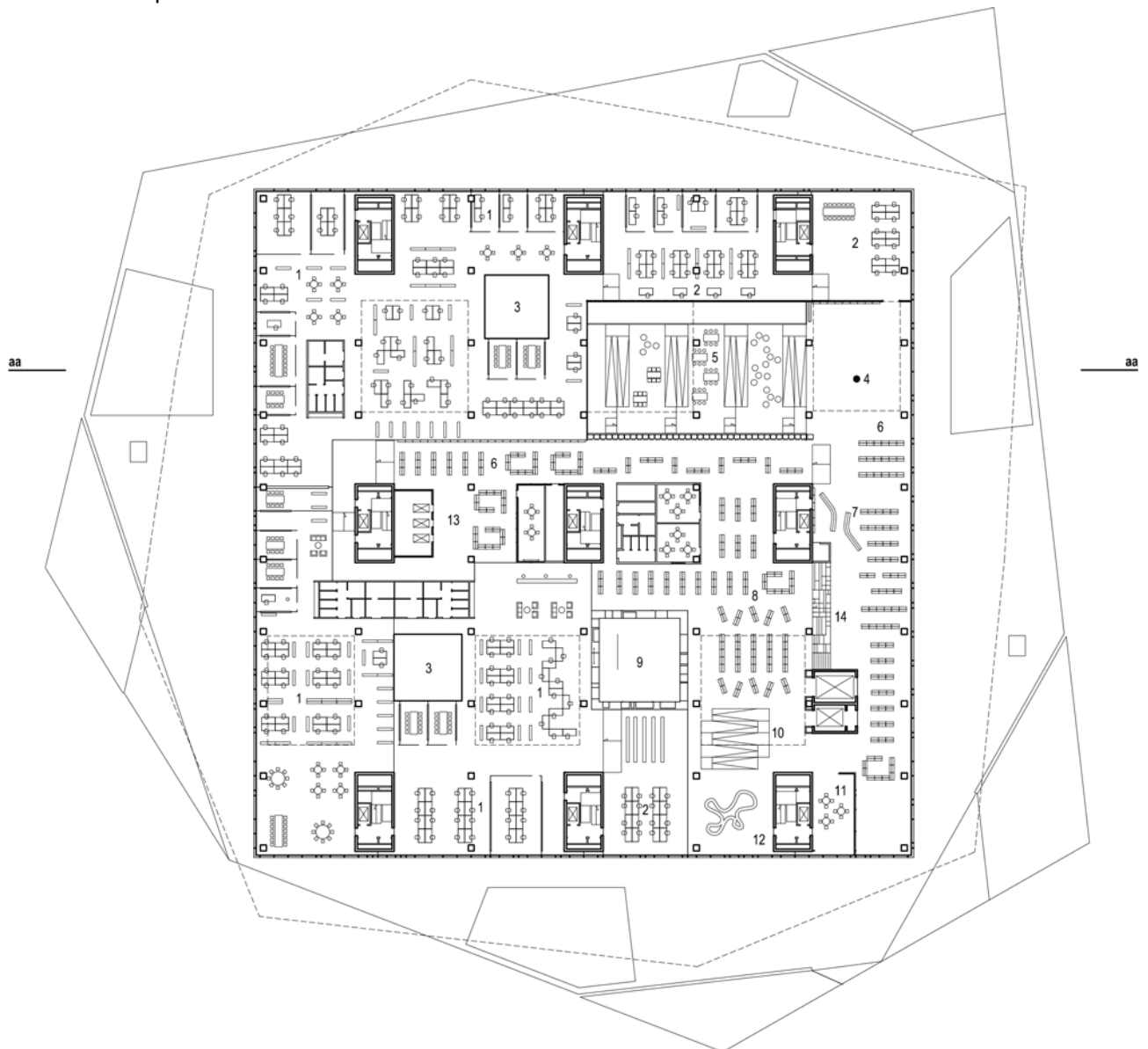
Dokk1 – floor plan 1



Level 01 1:750

- 1 Reading room
- 2 Transformation room
- 3 Project rooms
- 4 Media collection
- 5 Media ramp
- 6 Panoramic elevator
- 7 Open to level 0
- 8 Study cells
- 9 Children theatre
- 10 Multipurpose hall
- 11 Entrance
- 12 Foyer
- 13 Reception
- 14 Citizens service
- 15 Self-service
- 16 Drop-off for the sorting machine
- 17 Campaign booth
- 18 Café
- 19 Meeting room
- 20 Living room
- 21 Outdoor area
- 22 Sculptural staircase

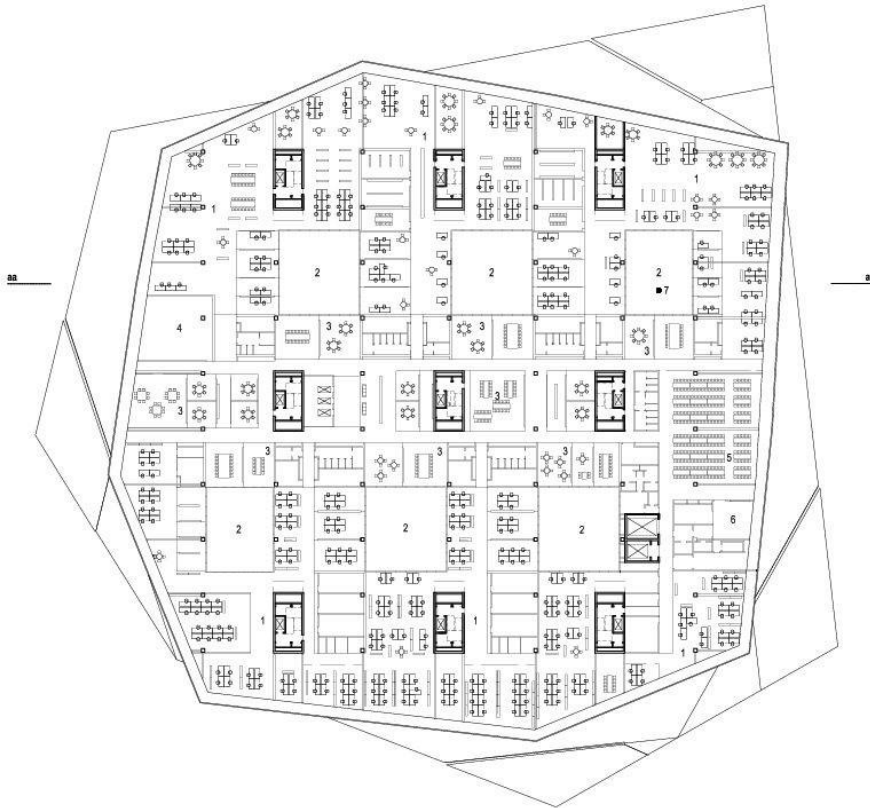
Dokk1 – floor plan 2



Level 02 1:750

- 1 Offices
- 2 Offices for European Capital of Culture Aarhus 2017
- 3 Open to level 1
- 4 Art
- 5 Media ramp
- 6 Media collection
- 7 Inspiration area
- 8 Learning area
- 9 Playing library
- 10 Mini ramp
- 11 Children lab
- 12 Small children's playroom
- 13 Twens medialounge
- 14 Stage

Dokk1 – floor plan 3



Level 03 1:750

- 1 Rentable office area
- 2 Open to level 2
- 3 Meeting rooms
- 4 Citizens service
- 5 Cariteen / common area
- 6 Kitchen
- 7 Art